



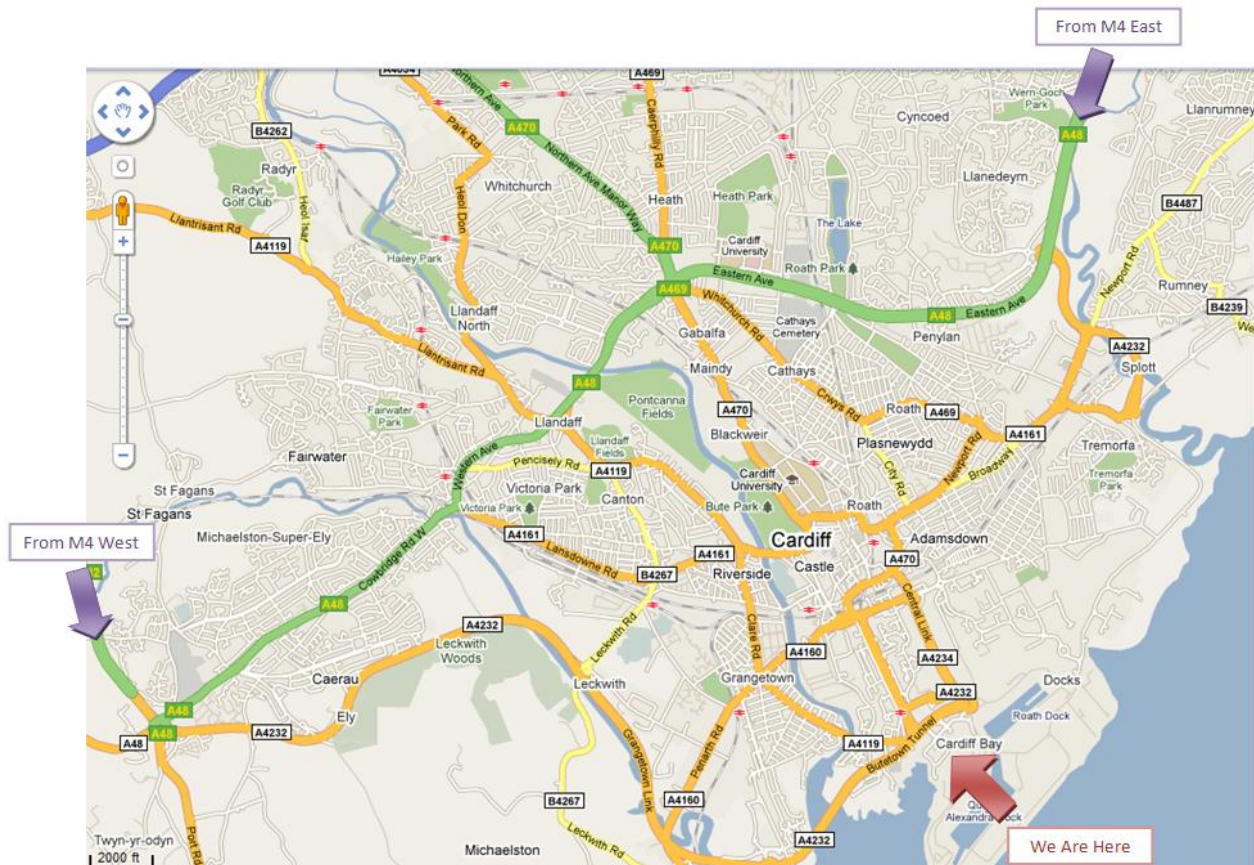
Directions to Gambit Corporate Finance LLP, Cardiff

3 Assembly Square
Britannia Quay
Cardiff Bay
Cardiff CF10 4PJ

By Train

Cardiff Central Rail Station is the closest large rail station. It is approximately 15 minutes to 3 Assembly Square by taxi.

Tel: +44 (0) 29 2047 5500
Fax: +44 (0) 29 2047 5501
Email: info@gambitcf.com
Web: www.gambitcf.com



By Car

From M4 West

- Leave the M4 at junction 33, then at roundabout take the 3rd exit onto the A4232, signposted Penarth.
- Soon after Cardiff Butetown Link Bridge, continue forward through tunnel.
- As you leave the tunnel, bear right.
- At the roundabout, take the second exit.
- Turn right onto Pierhead Street.
- At traffic signals continue forward passing Arup on your left.
- At traffic signals turn left onto East Bute Street, signposted National Assembly, Britannia Quay.
- 3 Assembly Square is on the right as you round the corner to the waterfront.



From M4 East

- Leave the M4 at junction 29 and join the A48 (M) motorway, signposted Cardiff E and S.
- Continue forward on the A48, signposted City Centre.
- Branch left onto Eastern Avenue, then at roundabout take the 1st exit onto the A4161, signposted City Centre.
- Branch left (signposted City Centre), then at roundabout take the 2nd exit onto Newport Road (A4161) signposted City Centre.
- At the roundabout, take the second exit onto Newport Road (A4161).
- At traffic lights continue on A4161.
- At traffic lights bear left on the A4161, signposted City Centre.
- At traffic signals turn left onto Fitzalan Place (A470), signposted Penarth A4160.
- Bear right onto Adams Street A470, signposted City Centre, Penarth A4160.
- Turn left onto Central Link.
- At the roundabout, take the first exit which leads directly to another roundabout.
- At the second roundabout, take the first exit.
- Turn right onto Pierhead Street.
- At traffic signals continue forward passing Arup on your left.
- At the second set of traffic signals turn left onto East Bute Street, signposted National Assembly, Britannia Quay.
- 3 Assembly Square is on the right as you round the corner to the waterfront.

Parking

There is limited pay and display street parking just outside the building on East Bute Street. Otherwise Cardiff Waterside Car Park can be found if you turn right at the first set of traffic lights on Pierhead Street. If you have reserved a parking space with us (unfortunately these are very limited), our car park is after our building, on the right.

